

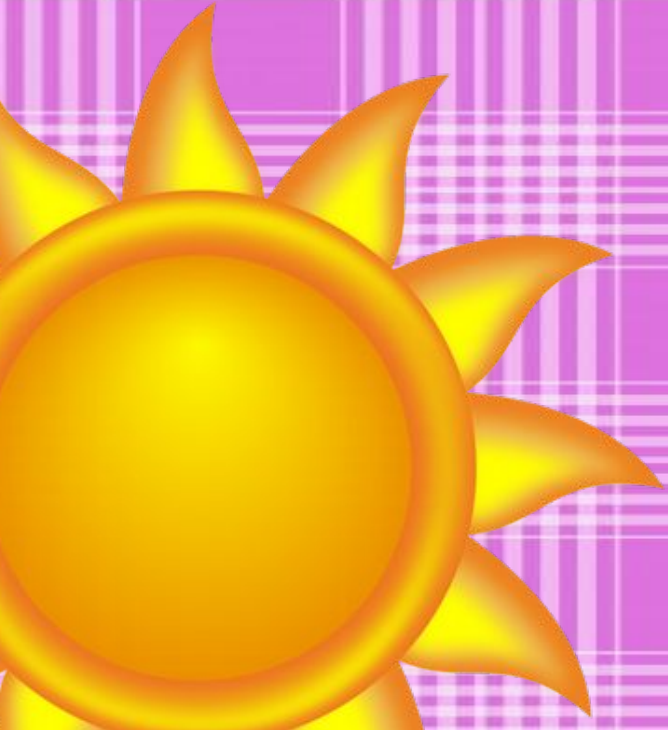


# **FRIDAY'S SEL Lesson**

**5/12**



# ICEBREAKER



*Would you  
rather meet you  
future self or  
your past self.*

# WHAT IS SOCIAL BULLYING?

**SOCIAL BULLYING IS WHEN SOMEONE TRIES TO RUIN A REPUTATION BY SPREADING LIES OR RUMORS, MAKING MEAN COMMENTS AND EXCLUDING OTHERS. SOCIAL BULLYING IS THE MOST COMMON TYPE OF BULLYING.**



## **SOCIAL BULLYING IS...**

**A) PHYSICALLY  
HURTING  
someone**

**C) MAKING mean  
comments**

**B) TRYING TO RUIN  
A REPUTATION**

**D) POSTING mean OR  
RUDE comments  
online**





**WHAT WE SAY AND HOW WE TREAT PEOPLE MATTERS - IN-PERSON, online, IN TEXT**

**BULLYING, TEASING, AND GENERAL RUDENESS/MEANNESS IS NOT OKAY.**

**one WAY we've seen THIS PLAY OUT RECENTLY IS USE OF DEROGATORY LANGUAGE.**

**EXAMPLES:**

**“N-WORD” - FULL WORD OR PARTIAL**

**WETBACK**

**HITLER**

**CHING CHONG**

**RETARD**

**PIG**

## **WHY NOT?**

**ALL OF THESE WORDS/PHRASES DEMEAN PEOPLE, TRYING TO MAKE FOLKS LESS THAN HUMAN WITH THE SAME RIGHT TO EXIST IN THE SAME PLACE YOU DO.**

**USING SLURS IS UNACCEPTABLE AND MAKE THE PERSON USING THEM SOUND PREJUDICED AND UNINTELLIGENT. IF HEARD, THEY SHOULD BE CALLED OUT AND REPORTED.**

**WHAT ARE SOME WAYS YOU COULD RESPOND WHEN YOU HEAR SLURS BEING USED?**



**NOW LET'S HAVE some FUN!!!!!!**  
**DRAW ANY OF THE FOLLOWING QUESTIONS!!**

**WHAT ARE YOUR PLANS FOR THE summer?**

**WHAT ARE you GOING TO miss AT SCHOOL?**



**Fun  
UPDATE**



**9 SCHOOL  
DAYS TILL  
summer!!!!**