

# Friday's SEL Lesson

## *Community Circle*

# Join the SEL Committee

In order to better provide engaging, interesting, and relevant SEL lessons and policies, GMS will form a committee of 15+ students to discuss SEL topics, give feedback on lessons, offer insights into the GMS student experience, and contribute to the overall SEL process.

Students of all backgrounds are wanted in the committee, regardless of academic and/or behavior history on campus. If you have something to say about the GMS student experience, we want to hear it.

If you are interested, [fill out this form to be considered](#) for a position on the committee.

Scan the code or visit  
[tinyurl.com/SELGMS](https://tinyurl.com/SELGMS)  
to join.





# The Circle *Process*

## 1. *Ice breaker*

We will start by building connections to start opening up to each other.

## 2. *Storytelling*

Then, we will do an activity to start piercing the surface.

## 3. *Get personal*

After, we will explore problems and get more comfortable.

## 4. *Reflections*

Finally, we will reflect, appreciate, and check-out to wrap it up.

# Building

# Connections



## Icebreaker: Signatures Game

- Form a circle around the classroom
- Ask the students to make a “signature” movement or sound.
  - For example, claps, laughs, or dance movements.
- After a student goes, they have to repeat the last 2 people’s signature move. Try to remember!
- Teachers can participate if they would like.

## More Examples ~

A cool trick you  
can do

A mime act

\*School appropriate\*  
Hand gestures

A little jig

# Piercing the *Surface*



Watch the video  
and discuss the  
following  
question as a  
class:

What are some  
times you've lied  
on social media?  
If you don't have  
social media or  
have not lied,  
why?



01

Whole Class  
Circle

02

Small Groups  
Circle



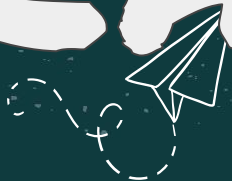
# CHOICE BOARD

03

Turn and  
Talk-Whole  
Class Share out

04

Blend Course  
Discussion  
Wall



# Delving Deeper

## *And Reflecting*

### *Full Class Circle*



What is one example of a bad experience you had on social media?

-or-

Have you ever had a bad reaction to a post on social media?

#### Instructions:

- Pick a prompt to respond to.
- In the circle, pass around the talking piece clockwise.
- Everybody will go around the circle and answer the prompt. If you don't want to speak, say pass and pass the talking piece to the next person.



# Delving Deeper

## *And Reflecting*

### *Small Group Circle*



What is one example of a bad experience you had on social media?

-or-

Have you ever had a bad reaction to a post on social media?

### Instructions:

- Break into small groups of 6-8 people and form a circle.
- Find a simple talking piece (a pencil, a book, a ball) for each circle.
- Each circle will choose a prompt.
- Everybody will go around the circle and answer the prompt. If you don't want to speak, say pass and pass the talking piece to the next person.

# Delving Deeper

## *And Reflecting*

### *Turn and Talk*



What is one example of a bad experience you had on social media?

-or-

Have you ever had a bad reaction to a post on social media?

### Instructions:

- Return to your seats.
- Pick a prompt to respond to as a class.
- Respond to the prompt in pairs, turning to the person closest to you. The oldest person shares first.
- Take turns sharing what you've discussed with the rest of the class.

# Delving Deeper

## *And Reflecting*

### *Blend Discussion Wall*



What is one example of a bad experience you had on social media?

-or-

Have you ever had a bad reaction to a post on social media?

#### Instructions:

- Teacher: Import this [discussion post](#) and post it on your advisory BLEND.
- Take 2-3 minutes to respond to the post.
- Then, take another few minutes to read student submissions. You can reply if you would like to.