

Back To Gorzycki

A new year, a new beginning



Upcoming Weeks Agenda

Week 2

August 22nd (A Day): Excel Procedures

August 23rd (B Day): Field Trip Policies

August 24th (A Day): Fire Drills

August 25th (B Day): Lockdown Drills

August 26th (C Day): SEL Circle

☆
 $\sqrt{123}$

☆
8/22 Day 1!

Excel Procedures



STUDY
HARD!
☆

☆
+ x ÷



Welcome Back

If you could eat only one
thing for the rest of your
life, what would it be?



Guess the Gibberish

These are a group of words, that at first glance and first saying don't make sense... but say them SLOWLY and LISTEN to what you hear to figure out what the phrase is.

Watch the video for an example.

**GUESS THE
GIBBERISH!**

Abe an an appeal



How we will play

1. You will see the gibberish & be given some time to think and make a guess

2. You will see a visual clue & be given more time to think and make a guess

Abe An An Appeal

3. I will reveal the answer

A Banana Peel



This round will be all about food!

All about food

BOE DAY TOTE SHIPS

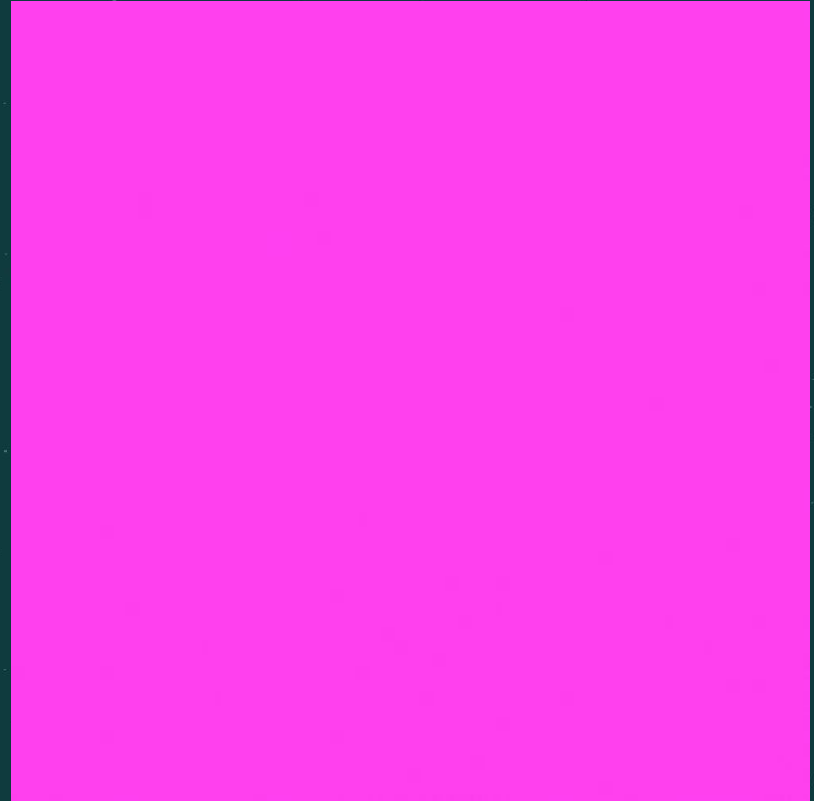
POTATO CHIPS



All about food

SHE IS BURG HER

CHEESEBURGER



All about food

HIGHS CREEK OWN

ICE CREAM CONE



All about food

PING HUT BUD HER IN
CHILL LEE

PEANUT BUTTER &
JELLY



All about food

SAW HIFT TALK OHS

SOFT TACOS



Excel, What is it?

EXCEL

- A time for students to receive extra help with a subject during a set day for that subject.
- It is also a place to build strong relationships. We will build a lot of community here through our SEL circles.
- If no tutoring is needed, students stay in their excel class and use it as a study hall.
- If your teacher is receiving kids for their tutoring day, and need students to leave, you will be reassigned to the cafeteria.



Excel Routine-Beginning on September 5th

How will our time be structured during Excel?

Excel Schedule

when can I go to tutoring for a certain subject?

▷	Monday
▷	
▷	
▷	S. S. and
▷	LOTE
▷	Electives

*	Tuesday
*	
*	ELA
*	
*	
*	

◊	Wednesday
◊	
◊	
◊	Math
◊	
◊	

▷	Thursday
▷	
▷	
▷	Science
▷	
▷	

↳	Friday
↳ <td></td>	
↳ <td></td>	
↳ <td>SEL</td>	SEL
↳ <td></td>	
↳ <td></td>	

- This is for tutoring. It is not for making up work.
- After the tardy bell, you will have 5 minutes to check in for attendance and travel to your tutoring location. A second bell will sound at which time all students should be in their tutoring location. After that times, students will need a pass to be in the hallway.

Need Extra Help?

Ask your teacher for intervention!

Your teacher will add you to our master spreadsheet and give you a pass, which will allow you to visit them during Excel intervention time.



What if I DON'T need extra help during
Excel?

Enrichment Menu

(Options Beyond Interventions, 40 minute block)

After Students' Homework is Completed

Options for Personalizing Your EXCEL:

- ★ Spelling Bee/Geography Bee/Quiz Bowl
- ★ UIL Practice
- ★ Book Club / Extended STIR / Library Trips
- ★ Genius Hour
- ★ Peer Tutoring
- ★ Extended homework help
- ★ Extra Credit Opportunities
- ★ CNN 10 / Current Events
- ★ NewsELA
- ★ Brain Breaks / Outside Games / Exercise
- ★ Puzzles / Board Games / Art Projects

☆
 $\sqrt{123}$

☆
8/23 Day 2!

Field Trip Policies



STUDY
HARD!
☆

☆
 $+ \times \div$



How we will play

1. You will see the gibberish & be given some time to think and make a guess

2. You will see a visual clue & be given more time to think and make a guess

Abe An An Appeal



3. I will reveal the answer

A Banana Peel

This round will be all about food!

All about food

RISE KER HIS PEAS

RICE KRISPIES



All about food

JOCK LIT PROW KNEES

CHOCOLATE BROWNIES



All about food

HAP PULLED USE

APPLE JUICE



FIELD TRIPS

Student Responsibility:

- Fees
- Paperwork (permission, transportation waivers, medical forms)
- Clear all school obligations (overdue library books, lost textbooks, etc.)



Field Trips-Who should be rewarded to go and why?

Jam Board

Remember to be mindful of what you post. You will leave a digital footprint and we will be able to tell who posted what.

FIELD TRIPS-Here are our expectations!

Field Trip Participation: Eligibility for field trips is based on UIL rules. Students will be held to the following criteria: Students must demonstrate acceptable behavior. Behaviors that result in in-school suspension (ISS), suspension, or removal from school may be grounds for the loss of field trip privileges. Students must pass all classes the nine weeks prior to the field trip with a 70 or higher. Students who fail any classes the previous nine weeks are required to have no failing classes on the most recent progress report in order to attend. Students must meet the state mandated 90% attendance rate for the school year (usually not more than 18 days for year-long classes and 9 for semester classes). Administrators will make the final determination regarding loss of field trip privileges.



FIELD TRIPS

Trip Expenses: Some trips will have expenses that must be paid in order for students to participate. Parents will be notified, well in advance, of any expenses that may be required. Financial scholarships may be available. No student should feel excluded from an activity due to their socioeconomic status.





Field Trips-Where do you want to go? Why?
What subject would it benefit?

Jam Board

Remember to be mindful of what you post. You will leave a digital footprint and we will be able to tell who posted what.

☆
 $\sqrt{123}$

8/24 Day 3!

**Fire Drills and
Handbook**

STUDY
HARD! ☆



+ x ÷



How we will play

1. You will see the gibberish & be given some time to think and make a guess

2. You will see a visual clue & be given more time to think and make a guess

Abe An An Appeal



3. I will reveal the answer

A Banana Peel

This round will be all about food!

All about food

BEP HER OWN KNEE
PEAS UH

PEPPERONI PIZZA



All about food

NOTCH HOSE ANCH
EASE

NACHOS AND CHEESE



All about food

BIS GETS HAN CRAY FEE



BISCUITS & GRAVY

IN AN EMERGENCY TAKE ACTION



HOLD! In your room or area. Clear the halls.

STUDENTS

Clear the hallways and remain in room or area until the "All Clear" is announced
Do business as usual

ADULTS

Close and lock the door
Account for students and adults
Do business as usual



SECURE!

Get inside. Lock outside doors.

STUDENTS

Return to inside of building
Do business as usual

ADULTS

Bring everyone indoors
Lock outside doors
Increase situational awareness
Account for students and adults
Do business as usual



LOCKDOWN! Locks, lights, out of sight.

STUDENTS

Move away from sight
Maintain silence
Do not open the door

ADULTS

Recover students from hallway if possible
Lock the classroom door
Turn out the lights
Move away from sight
Maintain silence
Do not open the door
Prepare to evade or defend



EVACUATE! (A location may be specified)

STUDENTS

Leave stuff behind if required to
If possible, bring your phone
Follow instructions

ADULTS

Lead students to Evacuation location
Account for students and adults
Notify if missing, extra or injured students or adults



SHELTER! Hazard and safety strategy.

STUDENTS

Use appropriate safety strategy for the hazard

Hazard

Tornado
Hazmat
Earthquake
Tsunami

Safety Strategy

Evacuate to shelter area
Seal the room
Drop, cover and hold
Get to high ground

ADULTS

Lead safety strategy
Account for students and adults
Notify if missing, extra or injured students or adults



EVACUATE! (A location may be specified)

STUDENTS

Leave stuff behind if required to
If possible, bring your phone
Follow instructions

ADULTS

Lead students to Evacuation location
Account for students and adults
Notify if missing, extra or injured students
or adults

EVACUATE

To the designated location.

Evacuate is called when there is a need to move students from one location to another, usually outside.

Below are examples of when a school or emergency dispatch might call for a hold.

- Bomb Threat made towards the school. (face to face notification, no PA announcement)
- Fire inside the school.
- Gas leak inside the building. (face to face notification, no PA announcement)

TEACHERS

- Lead evacuation to location
- Take attendance
- Notify if missing, extra or injured students via the red and green card system.

STUDENTS AND VISITORS

- Bring your phone.
- Leave your stuff behind.
- Follow instructions.

Expectations



- Walk calmly, but swiftly and with purpose to your designated evacuation location.
- No talking throughout the drill.
- Form a straight line once you have reached your evacuation location.
- If you were separated from your classroom's group, alert an adult immediately.
- Students should remain quiet as they re-enter the building once the drill has ended.

☆
 $\sqrt{123}$

☆
8/25 Day 4!

Lockdown Drills and
Handbook

STUDY
HARD!
☆



☆
+ x ÷



How we will play

1. You will see the gibberish & be given some time to think and make a guess

2. You will see a visual clue & be given more time to think and make a guess

Abe An An Appeal



3. I will reveal the answer

A Banana Peel

This round will be all about food!

All about food

CAT BREEZE HUN

CAPRI SUN



All about food

JIK HIN UGH ITS

CHICKEN NUGGETS



All about food

FUR ROSE IN YOKE HURT

FROZEN YOGURT



IN AN EMERGENCY TAKE ACTION



HOLD! In your room or area. Clear the halls.

STUDENTS

Clear the hallways and remain in room or area until the "All Clear" is announced
Do business as usual

ADULTS

Close and lock the door
Account for students and adults
Do business as usual



SECURE!

Get inside. Lock outside doors.

STUDENTS

Return to inside of building
Do business as usual

ADULTS

Bring everyone indoors
Lock outside doors
Increase situational awareness
Account for students and adults
Do business as usual



LOCKDOWN! Locks, lights, out of sight.

STUDENTS

Move away from sight
Maintain silence
Do not open the door

ADULTS

Recover students from hallway if possible
Lock the classroom door
Turn out the lights
Move away from sight
Maintain silence
Do not open the door
Prepare to evade or defend



EVACUATE! (A location may be specified)

STUDENTS

Leave stuff behind if required to
If possible, bring your phone
Follow instructions

ADULTS

Lead students to Evacuation location
Account for students and adults
Notify if missing, extra or injured students or adults



SHELTER! Hazard and safety strategy.

STUDENTS

Use appropriate safety strategy for the hazard

Hazard

Tornado
Hazmat
Earthquake
Tsunami

Safety Strategy

Evacuate to shelter area
Seal the room
Drop, cover and hold
Get to high ground

ADULTS

Lead safety strategy
Account for students and adults
Notify if missing, extra or injured students or adults



LOCKDOWN! Locks, lights, out of sight.

STUDENTS

Move away from sight
Maintain silence
Do not open the door

ADULTS

Recover students from hallway if possible
Lock the classroom door
Turn out the lights
Move away from sight
Maintain silence
Do not open the door
Prepare to evade or defend

LOCKDOWN

Locks, lights, out of sight.

Lockdown is called when there is a threat or hazard inside the school building. From parental custody disputes to intruders to an active shooter, lockdown uses classroom and school security actions to protect students and staff from threat.

Below are examples of when a school or emergency dispatch might call for a lockdown:

- Dangerous animal within school building
- Intruder
- Angry or violent parent or student
- Active shooter

TEACHERS

- Lock interior doors.
- Turn out the lights.
- Cover the window.
- Move away from sight.
- Do not open the door.
- Maintain silence.
- Take attendance.

STUDENTS AND VISITORS

- Move away from sight.
- Maintain silence.
- Do not open the door.
- If you are outside, run to a safe off-campus location.



Expectations



- Do not panic.
- Calmly and quietly move to a location in the room that is away from the door and cannot be seen through the door's window.
- No talking throughout the drill.
- If you are locked out of your classroom, alert any adult that you see.
- If you are outside and locked out of the building, go to the fields behind the tennis courts.

+ x ÷



☆
 $\sqrt{123}$

8/26 Day 5!

SEL Circle



STUDY
HARD!

☆
 $+ \times \div$



PLAY☆Line Up

- You can NOT TALK from this point forward until you get permission. ☆
- The class will divide into two teams that will compete. (Count off 1 and 2)
- Throughout the game you must be silent.
- To win, you and your team must use your wits to get in an order. The first one to get there wins. L
- READY!! LET'S PLAY!



ROUND 1: Line up by HEIGHT. ☆

ROUND 2: Line up by BIRTHDAY MONTH

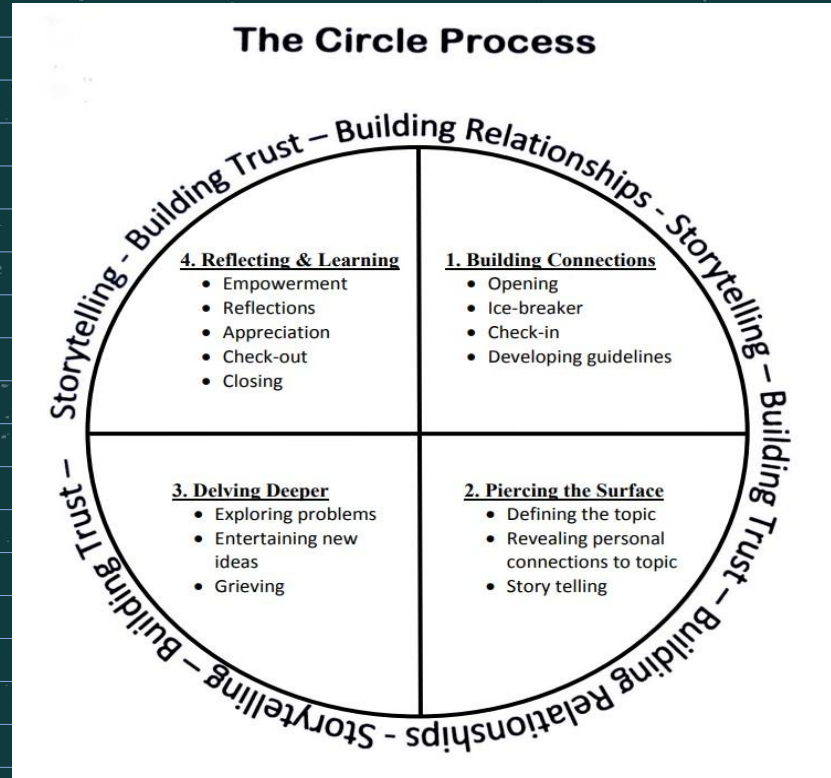
ROUND 3: Line up by LAST NAME

ROUND 4: Line up by FAVORITE ANIMAL ☆

SEL and Community Circles

RULES:

- Speak and listen from the heart
- Speak leanly and with empowerment
- Respect the talking piece
- Protect what is said in the circle





TIME TO SHARE OUT!



BRAIN MATCH

Share by making a connection to one other person. (i.e. I found out that ___ likes the same animal as me.)



SHOUT OUT

Give an acknowledgement to someone for how they participated. (i.e. I like how ___ used this strategy.)



AHA MOMENT

Share out something you learned about another person. (i.e. I didn't know that ___ had a cool last name.)





01

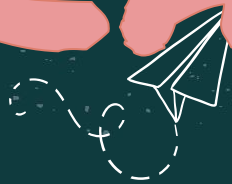
Whole Class Circle

02

Small Groups Circle



CHOICE BOARD



03

Turn and Talk-Whole Class
Share out



04

Blend Course Discussion
Wall

